



PEARL EXPEDITIONS

SMALL FOOTPRINTS. INFINITE HORIZONS

HORIZONTAL WATERFALLS - THE KIMBERLEY

CALENDAR OF EXPEDITIONS 2025/2026

V/4



THE KIMBERLEY

— PEARL EXPEDITIONS —

A Bespoke Australian Expedition Cruise Experience

Paspaley, Australia's foremost producer of fine pearls and a renowned name in outstanding pearl jewellery, is proud to announce the launch of Pearl Expeditions—a new, distinctly Australian owned, immersive expedition cruise venture. This initiative marks a partnership between Paspaley and cruise industry leader Sarina Bratton, bringing together unparalleled expertise and a passion for exploration.

KIMBERLEY . PAPUA NEW GUINEA . EAST INDONESIA . RAJA AMPAT . BORNEO



Welcome to a different kind of exploration. Created with you in mind.

We invite you to consider experiencing adventure on another level – exploring extraordinary land and seascapes aboard PASPALEY PEARL, our modern, stylishly elegant, expedition motor-yacht, sharing with just **30 fellow adventurers**.

Journey with a team of **21 attentive crew**, including four highly experienced expedition guides, who bring not only innate professionalism and local knowledge, but also share a passion for these remarkable places. Imbued with the relaxed hospitality enjoyed on superyachts, Pearl Expeditions represents a new spirit of exploration, where immersive adventure and elegance converge.

Expect expeditions that offer more more time to immerse yourself in each discovery, more depth of understanding, more flexibility, more meaningful interactions with both place and people, more connection with your expedition team that create experiences that will become part of your story, shared with those who journey alongside you.

Join us to visit places few have experienced – because exploration of rarely visited locations is at the heart of what we do, returning home with shared stories, eager for the sequel.

Sarina Bratton
Executive Chair



PASPALEY PEARL

At 53.5 metres in length and 11.2 metres in beam, the Paspaley Pearl strikes the perfect balance between elegant lines, stylish space and nimble access to remote destinations.

Life onboard befits being on your own elegant yacht. Enjoy stylish surroundings, thoughtful inclusions, friendly yet unobtrusive service, and cuisine designed by Serge Dansereau to satisfy your well-earned appetite, along

with inclusive fine wines - champagne and Australian classics - a fine range of spirits and refreshing beers. Your accommodation presents with all the quality furnishings and toiletries you expect, while you have both outside or inside dining options, and plenty of comfortable areas to relax with new found friends to observe the wondrous land and seascapes. Sunsets have never looked better.

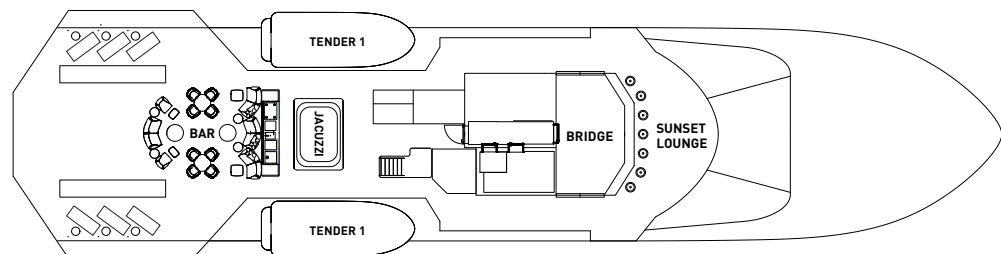
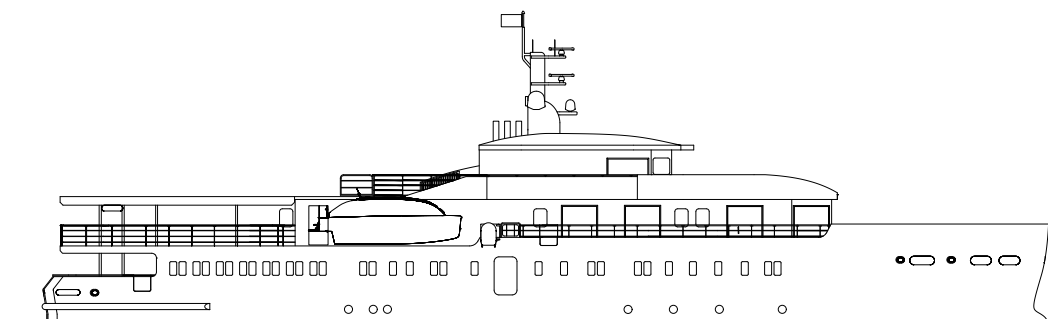


THE PASPALEY PEARL

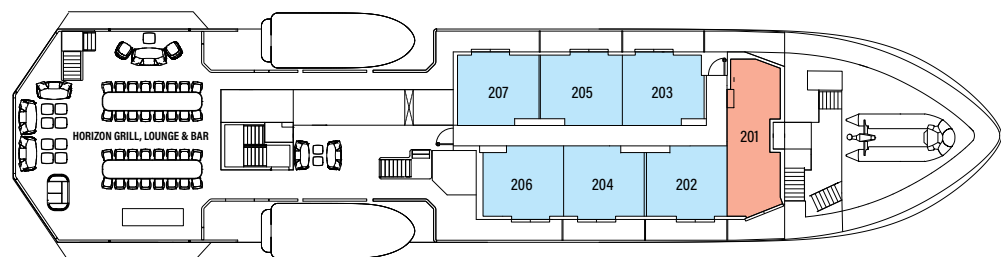
YOUR EXPEDITION VESSEL

Her extensive facilities and technical capabilities make her unique in the world of boutique, expedition yachts:

- One 32 seat indoor restaurant, lounge and bar
- One 32 seat outdoor restaurant, lounge and bar
- Sun Deck lounge and bar, sunbeds, 8-10 person jacuzzi
- Sunset lounge forward of the bridge
- 15 staterooms or suites. Maximum 30 guest capacity
- 7 staterooms with private balcony – the only boutique yacht in the region with balconies
- Marina deck for embarkation of expedition boats and Zodiacs
- Swimming, kayaking, paddle boarding directly from the stern of the yacht
- Nightly expedition recap and briefing in outdoor lounge and bar



SUN DECK



HORIZON DECK



OCEAN DECK



TAMI ISLAND, PNG

DESTINATIONS

The Kimberley will always be our heartland. Each year, we'll spend six months immersed in its vast landscapes, during the region's beautiful and temperate dry season in Australia's North West.

The other six months will take us further afield, to remote and rarely experienced destinations rich in nature and culture:

Papua New Guinea – We'll venture deep into the remote corners of this fascinating country, engaging with ancient village communities and learning from the rich, traditional cultures of its people.

Raja Ampat, Indonesia – Known as the global epicentre of tropical marine biodiversity, this remote paradise is made up of over 1,500 islands across 70,000 square kilometres of ocean and land. With a small population of just 67,000 people, it is also a sanctuary for rare and exotic bird species.

Eastern Indonesia – From Dili to Bali, our journey includes swimming alongside whale sharks in Saleh Bay, witnessing the power of Komodo dragons, attending traditional water buffalo races, and deep cultural connections with local communities.

Southwest Borneo (Kalimantan) – We'll search for the "faces in the forest": orangutans, with whom we share 97% of our DNA. Along the Kumai River, we'll encounter not only orangutans but also proboscis monkeys, macaques, and the incredible biodiversity of this untouched wilderness.

DESTINATIONS

The Kimberley

July 2025 – September 2025

7 and 10 night voyages showcase the ‘must see’ highlights of the astounding Kimberley coastline including the Horizontal Waterfalls, Montgomery Reef, Hunter River and King George Falls, plus add deeper exploration aboard Paspaley Pearl to explore further into the spectacular waterways and coves that define this vast land and sea-scape. Return in awe of the regions stunning waterfalls, towering sandstone cliffs and remarkable tortured geology reflecting eons of relentless tectonic pressure, in a vast land much of which pre-dates the existence of fossils.

PEARL EXPEDITIONS



HUNTER RIVER

Papua New Guinea

October – December 2025

A remarkable series of voyages that delve deep into the myriad cultures and traditions of the islands of Papua New Guinea, including Tufi, Tami, Samarai and the Trobriand Islands.

Expect visits to isolated coastal and riverine villages that rarely encounter outsiders, visit remnant WWII sites and memorabilia, enjoy outstanding snorkelling and diving, and cultural interactions with special access to view extraordinary tribal activities such as fire dancing, ritual tattooing and traditional sago making. From active volcanoes to exploring the enigmatic Sepik River, memories of these voyages will remain with you forever.

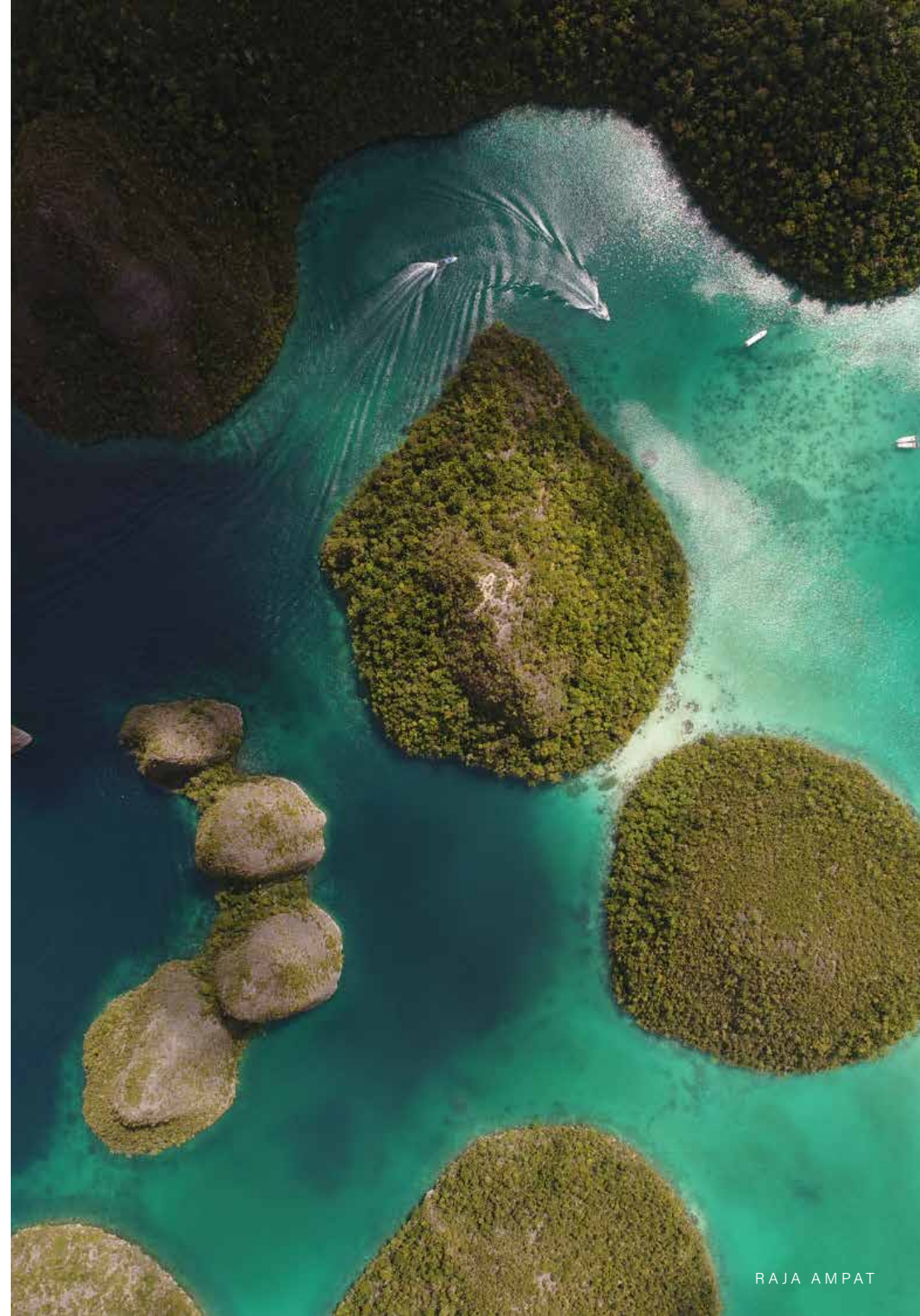
DESTINATIONS

East Indonesia and Raja Ampat

December – March 2026

Select from 6 expeditions which include exploring the isolated islands and diverse cultures of East Indonesia including Saleh Bay, renowned for its whale shark encounters, and the crystal clear waters of the Maluku islands.

Perhaps the crown jewel is Raja Ampat, a visually and ecologically stunning archipelago located off the northwest tip of the Bird's Head Peninsula. Your days here, yes, days, will be filled with above and under-water adventures in locations that nurture one of the highest densities of marine life on our planet. Perfect for avid snorkellers and divers alike. Then ... on to Banda Neira in the exotic Spice Islands for, literally, the taste and aromas of Portuguese and Dutch colonial spice trading history!



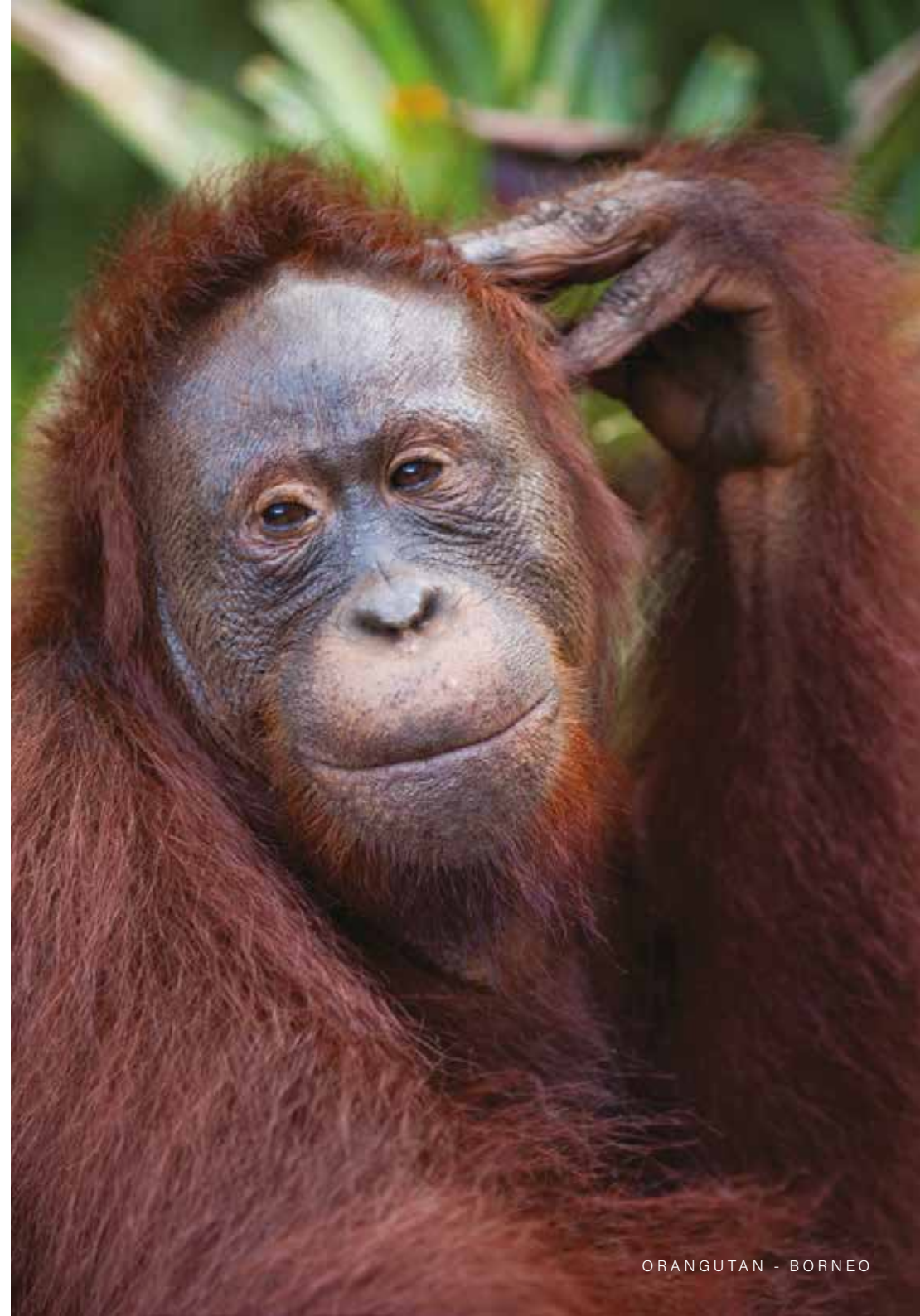
DESTINATIONS

Borneo

January – March 2026

These 'Faces in the Forest' voyages conveniently commence and conclude in often-frenetic Bali, however these expedition voyages present stimulating visual and emotional contrasts.

Here ancient traditions blend with welcoming hospitality, glorious mosques glow in the sunlight, the active volcano Mt Bromo smoulders, and rice paddy fields abound. Your highlight may well be time spent wending your way along the densely forested (and proboscis-populated) Sekoyner River en-route to meet our 'cousins' the orangutans, encamped in the natural protected habitat Camp Leakey. Not to forget diving with gentle whale sharks or coming face to face with Komodo dragons, all adding to this fulfilling list of expedition experiences.



CALENDAR OF EXPEDITIONS

DAY	DEPARTURE DATE	NTS	DESTINATION	EXPEDITION	PORTS
Thu	31-Jul-25	10	Kimberley	Kimberley Expedition	WYNDHAM / King George River / Admiralty Gulf / Prince Frederick Harbour / Exclusive Paspaley Pearling Experience / Collier Bay (Incl. Montgomery Reef & Horizontal Falls) / Buccaneer Archipelago / BROOME
Sun	10-Aug-25	10	Kimberley	Kimberley Expedition	BROOME / Buccaneer Archipelago / Collier Bay (Incl. Horizontal Falls & Montgomery Reef) / Exclusive Paspaley Pearling Experience / Prince Frederick Harbour / Admiralty Gulf / King George River / WYNDHAM
Wed	20-Aug-25	10	Kimberley	Kimberley Expedition	WYNDHAM / King George River / Admiralty Gulf / Prince Frederick Harbour / Exclusive Paspaley Pearling Experience / Collier Bay (Incl. Montgomery Reef & Horizontal Falls) / Buccaneer Archipelago / BROOME
Sat	30-Aug-25	7	Kimberley	CHARTER	
Sat	06-Sep-25	7	Kimberley	PRIVATE EVENT	
Sat	13-Sep-25	6	Kimberley	PRIVATE EVENT	
Thu	19-Sep-25	7	Kimberley	Kimberley Highlights	BROOME / Buccaneer Archipelago / Collier Bay (Incl. Horizontal Falls & Montgomery Reef) / Exclusive Paspaley Pearling Experience / Prince Frederick Harbour / Admiralty Gulf / King George River / WYNDHAM
Thu	27-Sep-25	12	Arnhem Land & Cape York	CHARTER	
Sun	09-Oct-25	10	Papua New Guinea	Papua New Guinea Islands and Culture	CAIRNS / Samarai Islands / Deboyne Lagoon / Trobriand Islands / Tufi / Morobe Harbour / Tami Islands / Tuam Island / MADANG
Wed	19-Oct-25	10	Papua New Guinea	Papua New Guinea North Coast	MADANG / Kopar, Sepik River / Murik Lakes / Ali Island / Schouten Islands / Watam Village / Hansa Bay / KarKar Island / Nip Island / Tuam Island / MADANG
Sat	29-Oct-25	10	Papua New Guinea	New Britain Island Circumnavigation	MADANG / Nip Island / Witu Islands / Kimbe Bay / Ataliklikun Bay / Rabaul / Duke of York Islands / Jacquinot Bay / Tami islands / MADANG
Tue	08-Nov-25	10	Papua New Guinea	Papua New Guinea North Coast	MADANG / Kopar, Sepik River / Murik Lakes / Ali Island / Schouten Islands / Watam Village / Hansa Bay / KarKar Island / Nip Island / Tuam Island / MADANG
Fri	18-Nov-25	10	Papua New Guinea	New Britain Island Circumnavigation	MADANG / Nip Island / Witu Islands / Kimbe Bay / Ataliklikun Bay / Rabaul / Duke of York Islands / Jacquinot Bay / Tami islands / MADANG
Mon	28-Nov-25	10	Papua New Guinea	Papua New Guinea North Coast	MADANG / Kopar, Sepik River / Murik Lakes / Ali Island / Schouten Islands / Watam Village / Hansa Bay / KarKar Island / Nip Island / Tuam Island / MADANG
Mon	08-Dec-25	14	Papua New Guinea	CHARTER	
Sat	22-Dec-25	12	Indonesia	Raja Ampat & Spice Islands Expedition	DILI /Kei Islands/Raja Ampat (5 days)/KitiKiti Waterfall/Banda Neira/Ambon/ DILI
Sat	03-Jan-26	10	Indonesia	Whale Sharks / Komodo / Culture	DILI / Kupang / Kalabahi / Lamelera / Flores / Komodo / Saleh Bay / Badas / BALI
Tue	13-Jan-26	11	Borneo	Faces in the Forest --Borneo	BALI / Madura / Kumai Bay / Probolinggo / Saleh Bay / Komodo National Park / Badas / BALI
Sat	24-Jan-26	10	Indonesia	Whale Sharks / Komodo / Culture	BALI / Badas / Saleh Bay / Komodo National Park / Flores / Lamalera / Kalabahi / Kupang / DILI
Tue	03-Feb-26	10	Indonesia	Whale Sharks / Komodo / Culture	DILI / Kupang / Kalbahi / Lamalera / Flores / Komodo National Park / Saleh Bay / Badas / BALI
Fri	13-Feb-26	11	Borneo	Faces in the Forest --Borneo	BALI / Madura / Kumai Bay / Probolinggo / Saleh Bay / Komodo National Park / Badas / BALI
Tue	24-Feb-26	11	Borneo	Faces in the Forest --Borneo	BALI / Madura / Kumai Bay / Probolinggo / Saleh Bay / Komodo National Park / Badas / BALI
Sat	07-Mar-26	10	Indonesia	Whale Sharks / Komodo / Culture	BALI / Badas / Saleh Bay / Komodo National Park / Flores / Lamalera / Kalabahi / Kupang / DILI
Tue	17-Mar-26	10	Indonesia	Raja Ampat & Spice Islands Expedition	DILI / Kei Islands / Raja Ampat (5 days) / KitiKiti Waterfall / Banda Neira / Ambon / DILI
Sun	29-Mar-26	12	Indonesia	Raja Ampat & Spice Islands Expedition	DILI / Kei Islands / Raja Ampat (5 days) / KitiKiti Waterfall / Banda Neira / Ambon / DILI

PRICING

- Pearl Suite
27sqm inc. balcony / Queen Bed
- Horizon Suite
20sqm inc. balcony / Queen Bed
- Ocean Stateroom
17.5, 18sqm / Queen Bed
- Ocean Twin Stateroom
16sqm / Twin Bed
- Double Bed Stateroom
14sqm / Double Bed



2025/26 Pricing (A\$)	East Indonesia	Borneo	Raja Ampat	Kimberley	Kimberley	PNG
Nights	10	11	12	10	7	10
Ocean Single*/Double Stateroom	\$17,495	\$19,495	\$20,995	\$17,495	\$12,995	\$17,495
Ocean Twin Stateroom	\$18,495	\$20,495	\$21,995	\$18,495	\$13,995	\$18,495
Ocean Stateroom	\$19,995	\$21,995	\$24,995	\$19,995	\$15,995	\$19,995
Horizon Suite	\$24,995	\$27,495	\$29,995	\$23,495	\$17,495	\$23,995
Pearl Suite	\$29,995	\$32,995	\$33,995	\$28,995	\$22,995	\$28,995

Prices are in AUD\$ per person based on twin share. Single supplement pricing is available on application. *Sole occupancy of stateroom #107 attracts no single surcharge. Prices above are inclusive of 10% GST for Kimberley sailings.

PASPALEY PEARL is available for sole use Charter by Individuals or Companies. Contact our Concierge for further details concierge@pearlexpeditions.com

CONTACT

Details of destinations, life onboard, accommodation options, expedition dates and itineraries for 2025 and 2026 will progressively be made available and updated on our website: www.pearlexpeditions.com to go live soon.

Further information and advice regarding forthcoming voyages is available now, speak to your Travel Agent or contact us:

Email: concierge@pearlexpeditions.com

Call: +61 2 7235 9999

Alternatively contact our Expedition Concierges:

Nicci Foulsham

nicci.foulsham@pearlexpeditions.com

Joanna Schuetz

jo.schuetz@pearlexpeditions.com

PEARL EXPEDITIONS

SMALL FOOTPRINTS. INFINITE HORIZONS



THE KIMBERLEY